



Institute for Health Behavioural Research  
National Institutes of Health  
Ministry of Health Malaysia

# KEY FINDINGS

## Preventive Behavior During COVID-19 Pandemic

An online survey among  
school children in Malaysia



**INFOGRAPHIC BOOKLET  
PREVENTIVE BEHAVIOUR DURING COVID-19 PANDEMIC AMONG SCHOOL CHILDREN IN MALAYSIA  
NMRR-20-2792-57322**

MOH/S/IPTK????-e

**Advisor**

Dr. Manimanaran A/L Krishnan Kaundan  
Director of Institute for Health Behavioural Research (IHBR)

**Principal Investigator**

Nurashma Juatan, Health Education Officer of IHBR

**Co-Investigator**

1. Nadia Hani Jahaya, Health Education Officer of IHBR
2. Zaikiah Mohd Zin, Health Education Officer of IHBR
3. Abu Bakar Rahman, Health Education Officer of IHBR
4. Sheikh Shafizal Sheikh Iman, Health Education Officer of IHBR
5. Dr Normawati Ahmad, Health Education Officer of IHBR
6. Saiful Adli Suhaimi, Health Education Officer of IHBR
7. Mohamad Zaidan Zulkepli, Health Education Officer of Sarawak General Hospital

**Reviewer**

?  
?

**Disclaimer**

The views and opinions expressed in this infographic booklet are those of the authors alone nor the view or policy of the Ministry of Health.

**Suggested Citation**

Institute for Health Behavioural Research (IHBR). 2022. Key Findings - Preventive Behaviour During COVID-19 Pandemic: An Online Survey Among School Children in Malaysia.

**Acknowledgement**

We would like to thank the Director General of Health Malaysia for his permission to publish this infographic booklet.

**Published and distributed by:**

Institute for Health Behavioural Research (IHBR)  
Block B3, National Institutes for Health (NIH) Complex,  
No. 1, Jalan Setia Murni U13/52,  
Seksyen U13, Setia Alam,  
40170, Shah Alam, Selangor.



03- 3362 7600



[www.iptk.gov.my](http://www.iptk.gov.my)



# List of Infographic



i. Introduction



ii. Respondents Profile



iii. Knowledge: What is COVID-19?



iv. Knowledge: How does COVID-19 spread?



v. Knowledge: What are the main symptoms of COVID-19?



vi. Knowledge: How to avoid COVID-19?



vii. Preventive measures: Body temperature screening



viii. Preventive measures: Physical distancing



ix. Preventive measures: Hand hygiene



x. Preventive measures: Face mask-wearing



xi. Conclusion

# INTRODUCTION

## OVERVIEW

Malaysia has been placed under Recovery Movement Control Order (RMCO), which has seen more restrictions of the MCO have been ease and schools have begun operating in stages starting at the end of June 2020. School children were able to adapt to the new norms at school in accordance to the Standard Operating Procedures (SOP) issued by the Ministry of Education Malaysia. Despite this, the school encounters difficulties ensuring the health and safety of school communities when it is challenging for school children to maintain physical distance and good hand hygiene practices.



## AIMS

The objective was to assess knowledge and preventive measures of school children on COVID-19 during school session. The preventive measures include compliance with body temperature screening at school entrance, 1 meter physical distance, face masks use and hand hygiene care practices at school.

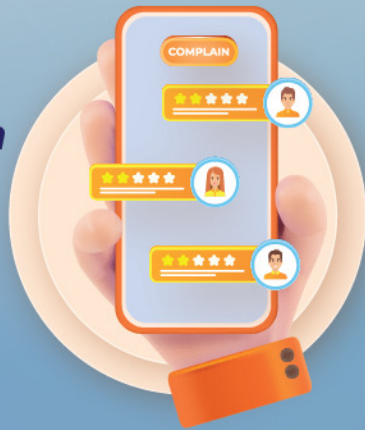




# METHODOLOGY

## Study Design

An Online Cross  
Sectional Survey



## Data Collection

14 – 24 June  
2021



## Sampling Technique

Two-stage  
stratified cluster



## Ethical Approval

- Medical Research & Ethics Committee, MOH
- Educational Planning & Research Division, MOE



## Target Population

Primary day school (Year 4 & 5)  
Secondary day school (Form 1, 2, 4 & 6)

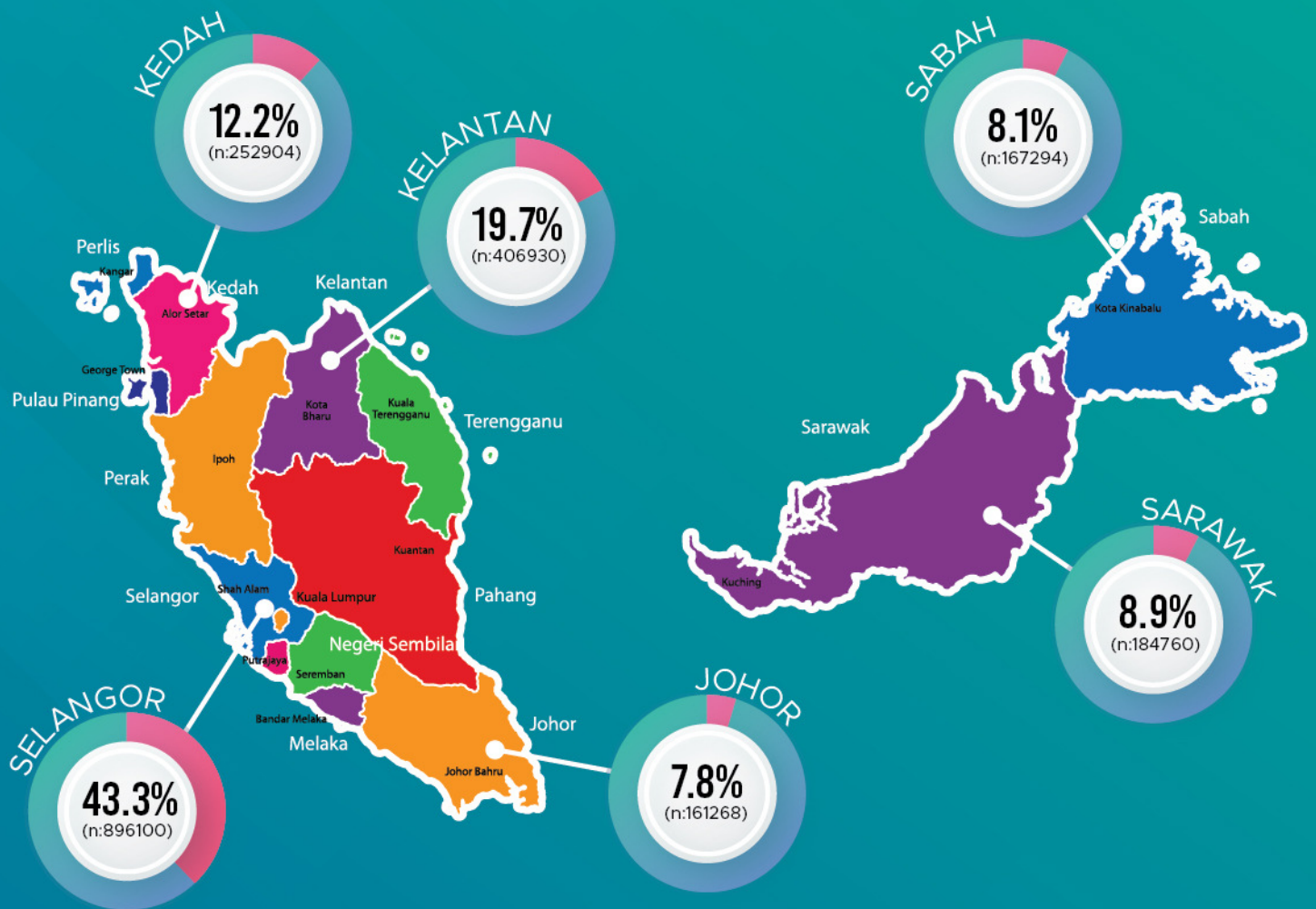


## Total Response

Required Sample: 3072  
Total response: 3485  
Response rate: 113%



# RESPONDENTS PROFILE



## KEDAH

- 46.7% SJK(C) Min Terk
- 46.2% SMK Mergong
- 3.4% SK Penghulu Ahmad
- 3.6% SMKA Ma'ahad Tahfiz Al-Abidin

## KELANTAN

- 32.0% SK Sultan Ibrahim (1)
- 42.1% SMK Kubang Kerian
- 12.3% SK Jeli (1)
- 13.6% SMK Cherang Ruku

## SELANGOR

- 33.7% SK Desa Baiduri
- 61.8% SMK Ungku Aziz
- 2.5% SK Ulu Semenyih
- 2.0% SMK Bagan Terap

## SABAH

- 12.8% SK Lahad Datu II
- 17.1% SMK Tinggi Kota Kinabalu
- 35.8% SK Darau
- 34.3% SMK Sook

## JOHOR

- 46.7% SJK(T) Masai
- 46.2% SMK Sultan Ibrahim
- 3.4% SK Medini
- 3.6% SMK Tinggi Segamat

## SARAWAK

- 31.9% SK Kampung Jepak
- 17.3% SMK Petra Jaya
- 20.2% SK Abang Aing
- 30.7% SMK Meradong



## Gender



Boys  
50.0%



Girl  
50.0%

## Ethnic



## Religion

1  
Islam  
77.5%

>

2  
Buddhist  
10.4%

>

3  
Hindu  
4.8%

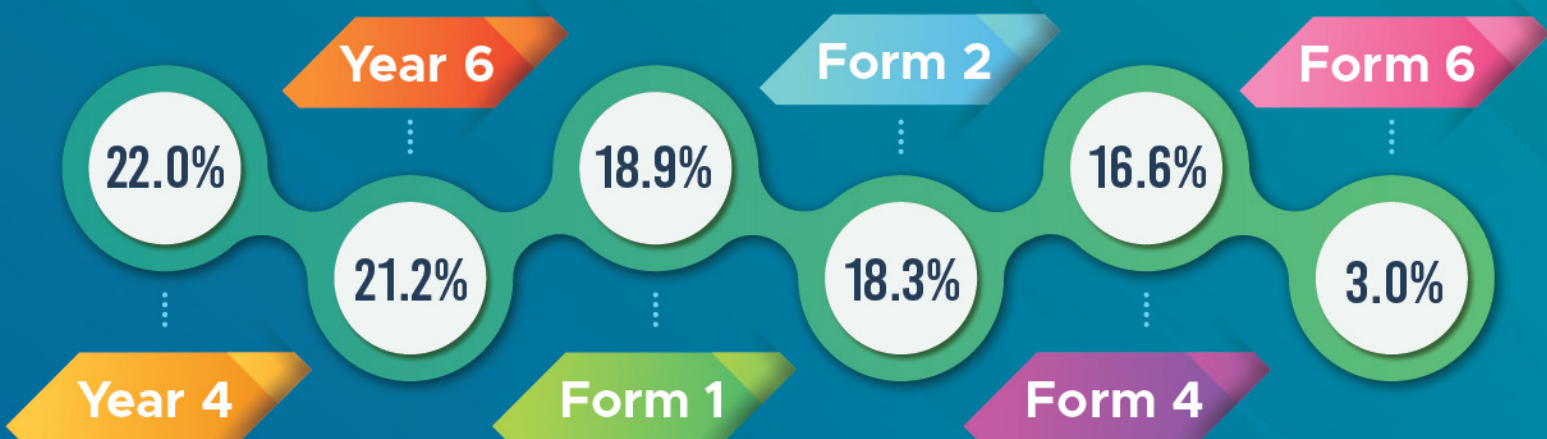
>

4  
Christian  
7.1%

>

5  
Other  
0.2%

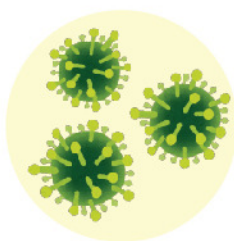
## Year





# KNOWLEDGE

## What is COVID-19?



Virus  
**98.6%**



Respiratory  
tract  
infections  
**94.4%**



Infections  
can be  
seen within  
14 days  
**84.1%**



Patients with no  
symptoms can  
infect others  
**90.1%**



The elderly/people  
with health problems  
are more likely to  
get and lead to death  
**94.8%**

## How does COVID-19 spread?



Respiratory  
droplets  
**96.0%**



Touch  
contaminated  
surfaces  
**93.1%**



Share food  
and drink with  
symptomatic  
**88.1%**

## What are the main symptoms of COVID-19?



Fever  
**97.5%**

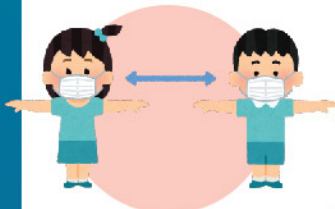


Cough  
**97.5%**



Shortness  
of breath  
**97.5%**

## How to avoid COVID-19?



1 meter  
away  
**98.7%**



Wear face  
mask  
**99.6%**



Wash hand  
with soap  
and water  
for at least  
20 second  
**84.9%**



Wash hands  
with soap and  
water after  
touching  
contaminated  
surfaces  
**98.9%**



Don't touch  
eyes/nose/  
mouth with  
unwashed  
hands  
**95.6%**



# PREVENTIVE MEASURES

## BODY TEMPERATURE SCREENING



My body temperature was taken each time I entered school

94.8%

## PHYSICAL DISTANCING



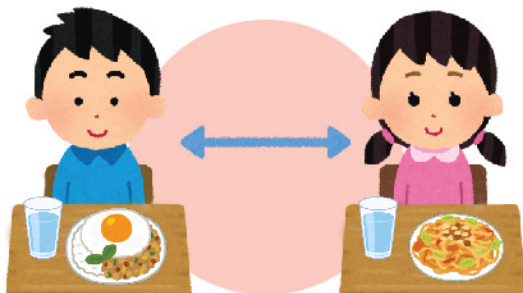
I keep at least 1 meter away from classmates **every time** I am in the classroom during a learning session with the teacher.

82.6%



I keep at least 1 meter away from my classmates **every time** the teacher is not in the classroom.

69.3%



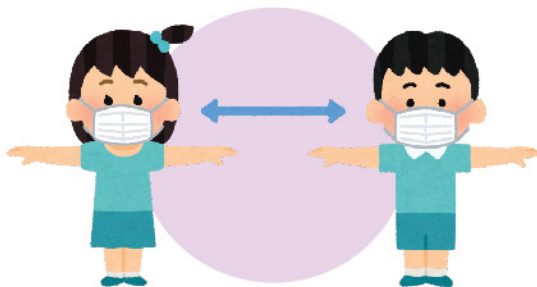
I have **never** eaten at a table with a distance of less than 1 meter with a friend during a break in class.

70.0%



I never walked less than 1 meter with friends when heading to the school exit fence.

47.5%



I keep at least 1 meter away from my classmates **every time** I queue for body temperature screening at the school entrance.

86.9%



I **never** made physical contact with my friends at school while we conversed and joked.

62.1%

# PREVENTIVE MEASURES

## HAND HYGIENE

Every time I wash my hands, I...



...use soap and water at school

**54.3%**



...use hand sanitizer at school

**58.5%**



... take at least 20 seconds

**46.5%**

## FACE-MASK WEARING



I always wear a face mask at school.

**87.9%**



I wear a new disposable face mask every time I go to school.

**80.4%**



I wear a clean and washable fabric face mask to school every day.

**27.6%**



I usually wear a face mask that covers my mouth and nose when I'm at school.

**97.7%**



After returning from school, I shall continue to discard the used face mask.

**84.4%**



I disposed of the used face mask in the trash.

**95.8%**



# CONCLUSION



The majority of students showed a high percentage for the overall item of general knowledge about COVID-19.



A high percentage of students comply with body temperature screenings.



A declining rate of self-control in maintaining physical distance during the exchange of study time, recess time and after school sessions.



Low participation rate in the practice of washing hands frequently among students.



The majority of students wear face masks to school, despite the fact that healthy and asymptomatic students were not required to do so at the time.



Institute for Health Behavioural Research  
National Institutes of Health  
Ministry of Health Malaysia